

Activate your data. Create knowledge to optimize life in the cities & their environment.

OUR APPROACH

In Geographica we design and develop products based on *GIS* and *Data Science* for Smart-Cities

www.geographica.gs



CONTACT

Héctor García

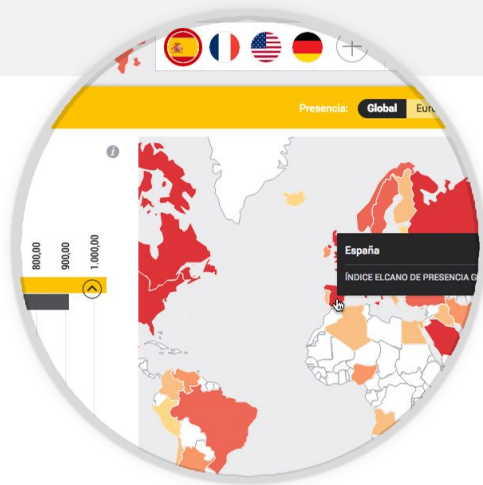
CEO and founder

hectorgarcia.@geographica.gs

geographica 

Analyze, integrate and visualize your data

Improve data transparency and promote citizen participation



01

Create knowledge

We analyze and extract knowledge from your data. We develop tools to edit online your spatial information, create indicators, build simulations with past and futures scenarios, everything in the cloud. Easy and quick.



02

Organize your data

Geographica develops mobile and web applications that mix easily in just one place a great amount of data, explore it geographically and make decisions within a spatial perspective.



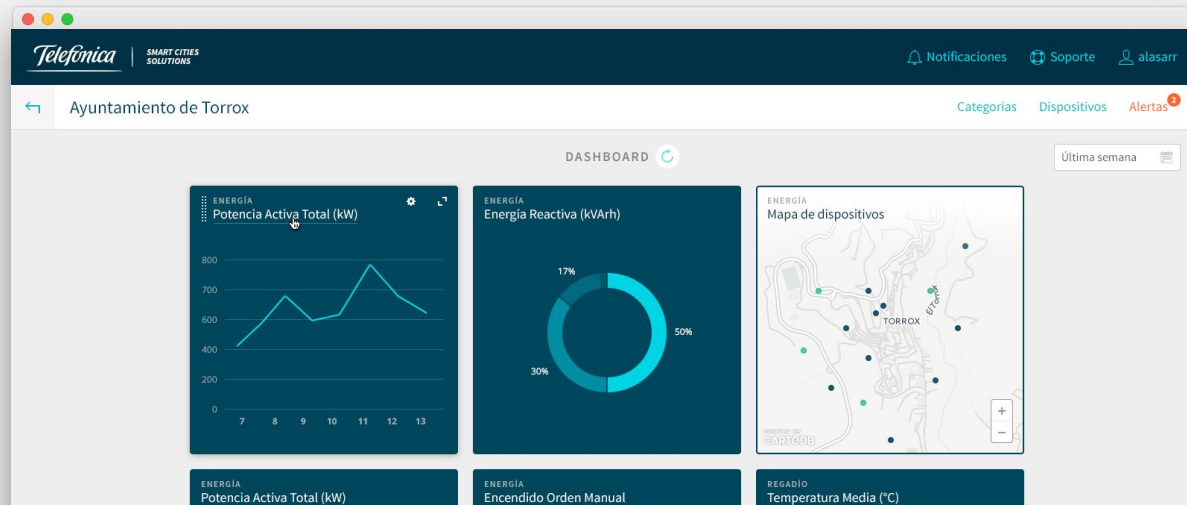
03

Project your data

We create maps, powerful and intuitives graphic visualizations, find patterns and connect your information with others more effectively. Use gamification techniques to engage users.

Expertise

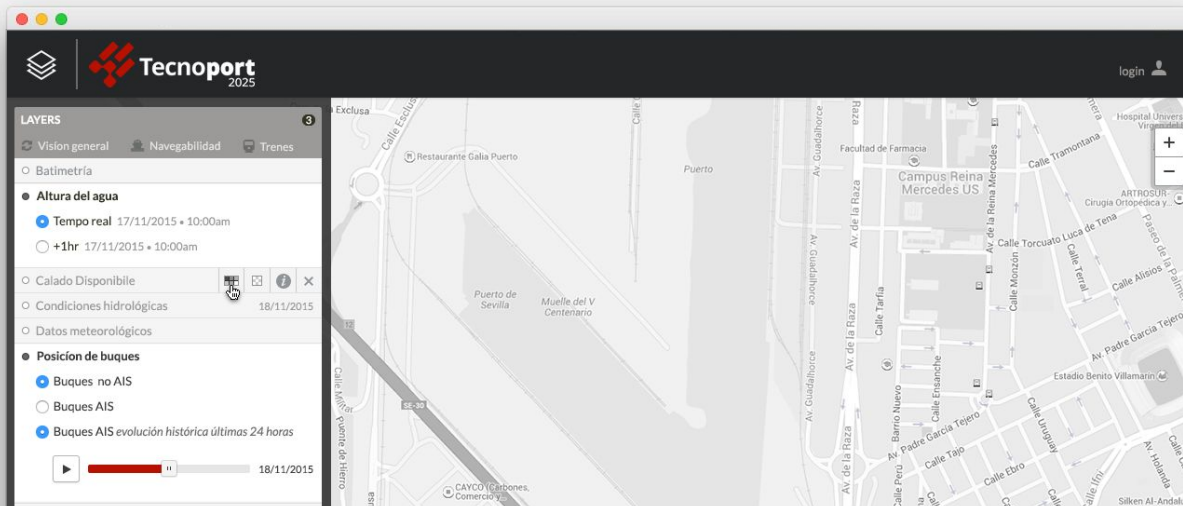
Smart Cities - Sensor data analysis and visualization



Geographica works with Telefónica in Smart City projects. Telefónica has installed sensors in several cities to measure real time data on different themes (emissions, lighting, etc.). Geographica is processing and analysing this huge amount of Big Data. We integrate, analyze this data, and develop solutions for getting the best insights and conclusions. The aim of the project is to improve the quality of life, reduce energy costs and environmental impact.

Expertise

Big Data analysis and visualization for river basins



Tecnoport2025 is an I+D+i project developed for Sevilla Port Authority. Geographica has developed a complex system for data processing and interpolation. Data can be easily visualized in a simple application that shows real time data about the height of the water levels, draught, 24 hours forecast, ships position, etc. The study area covers the whole Guadalquivir river.

Expertise

Smart Cities & Big Data for México DF

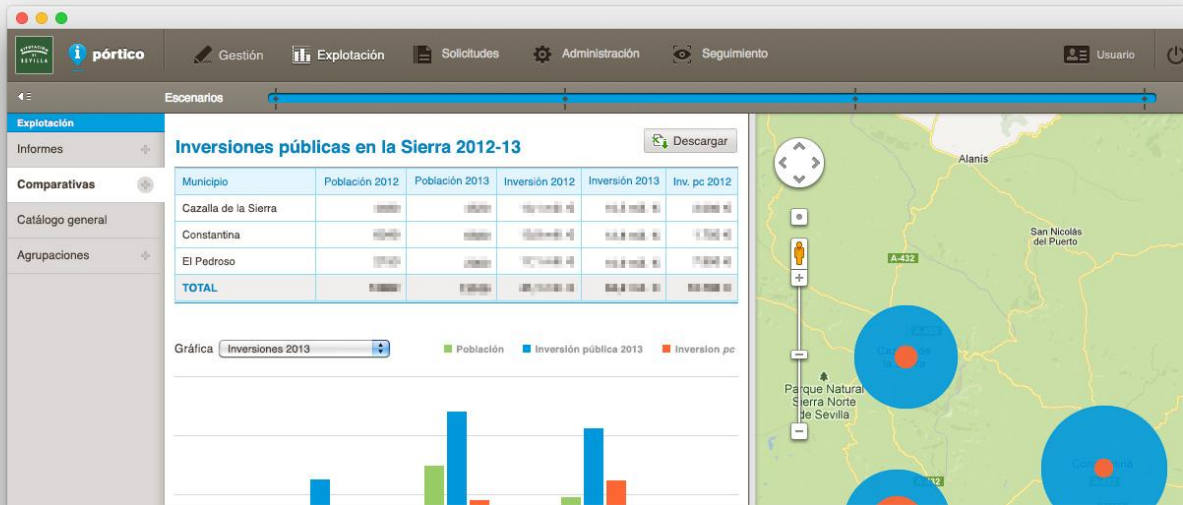


The government of Mexico DF has engaged us for designing and developing a private web platform that process, analyze and show in a very simple way a huge spatial data catalog (Big Data) on a wide range of themes related to Mexico DF (environment, society, economy, heritage, etc.).

Thanks to the platform they can easily monitor their territory and improve their decision making processes

Expertise

Pórtico - Smart City Control Center tool



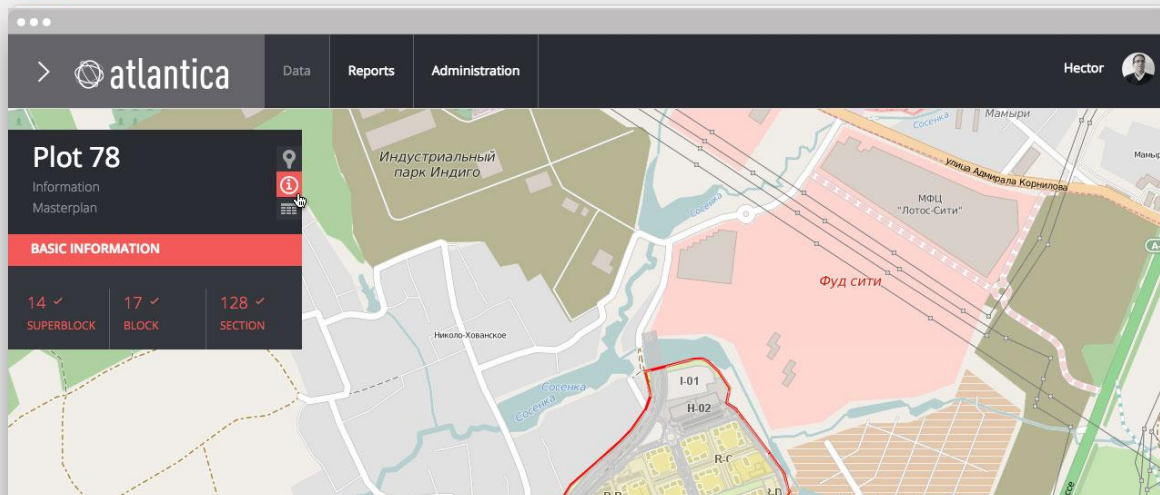
Complete dashboard to assist corporate and government officers in critical decision making processes. It allows the online visualization and edition of spatial information, reporting, creation of indicators in real time, hypothetical scenarios and comparisons, and perform evolutive studies. It's a centralized tool for geographical data management in the investment, management, mobility, transports, security, and facilities fields. It also counts with a **mobile application** that provides technicians with a simple tool for including new data to the system and reporting on-field data.

More info: <http://www.geographica.gs/en/casosestudio/portico>



Expertise

Designing the future great Moscow



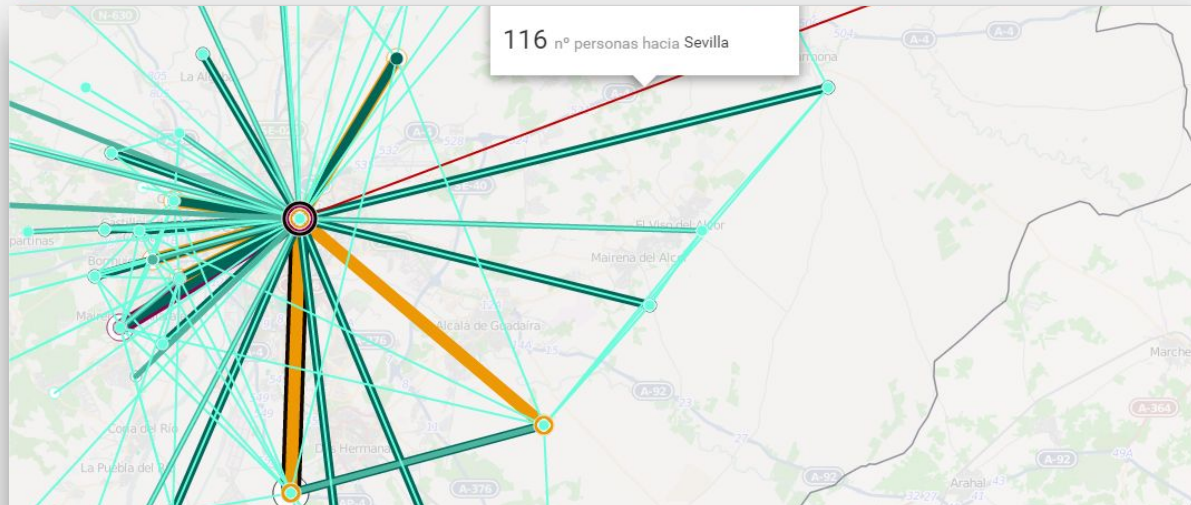
A spectacular project in Moscow won by **Atlantica** company (Eddea, Ghenova and Galia) has led us to make an application for the architecture world.

It is a private, web mapping tool which shows and works with a partial plan of a huge house promotion. The architecture world stopped thinking long ago that working with CAD tools was enough to express and manage the complexity of urban space. In this case **CAD, GIS, BIM** and **Generative Modeling** go hand by hand.

More info: <http://www.geographica.gs/en/casosestudio/portico>

Expertise

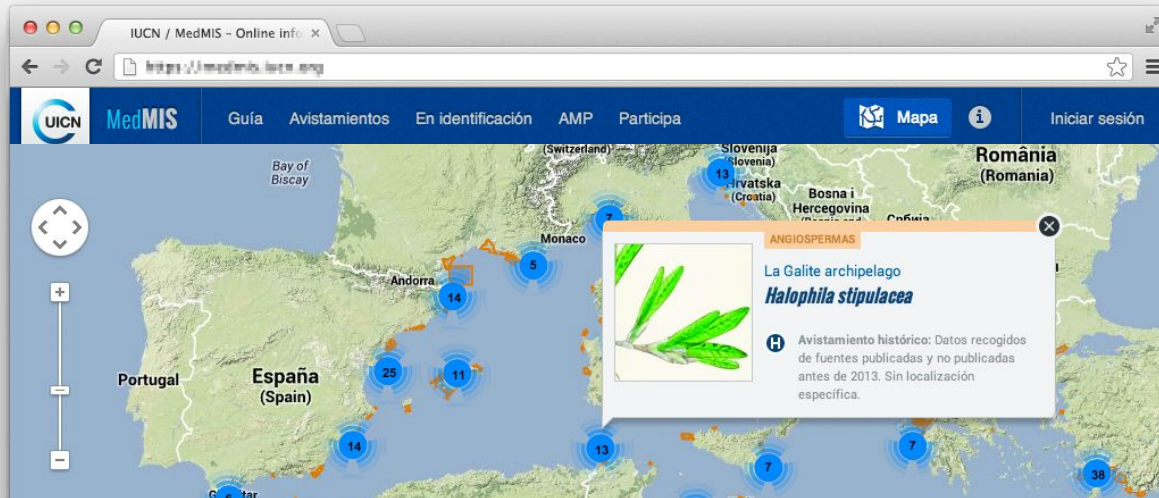
Mobility portals



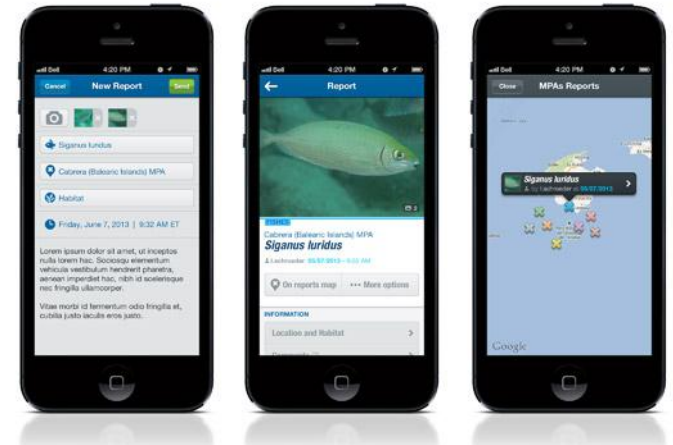
Geographica has developed private **mobility portals** for web and mobile devices. We efficiently collect and process real time Big Data. We engine algorithms for evolutive studies and spatial-temporal comparison on people and transport mobility. Geographica develops tools to analyse, monitor and improve **transports networks**.

Expertise

UICN/MedMIS App



MedMIS is an collaborative **Information System for monitoring marine invasive species** in Mediterranean Marine Protected Areas (MPAs). It has a **mobile application** and a **web platform**. It provides about 50 identifying sheets of all of the most important marine invasive species in the Mediterranean Sea. It allows marine scientists or people interested in conservational issues to upload reports of sightings of invasive alien species and to take part in identification discussions.



More info: www.iucn-medmis.org

Expertise

Geoportal for the Alboran Sea

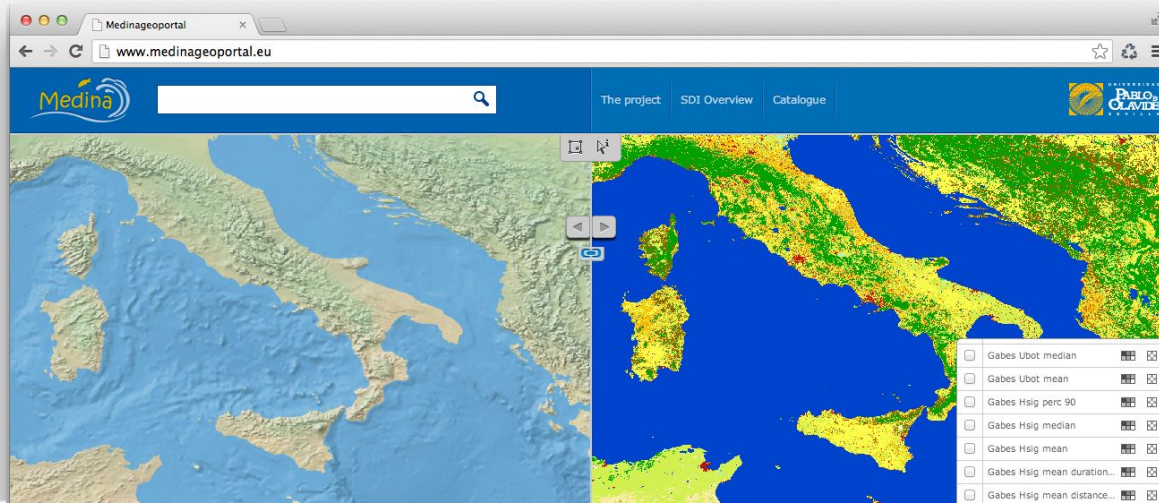


We have developed the **Geoportal for the Governance in the Alboran Sea** for the IUCN (International Union for Conservation of Nature). The geoportal aims to facilitate the exchange of experiences among stakeholders as to identify and unify the priorities that will improve the governance of natural resources in the Alboran Sea and promote sustainable and integrated management of the marine environment which makes it a powerful tool combining scientific data and information and collaborative stories like good practices performed in the Alboran Sea or biodiversity sightings.

More info: <http://www.iucn-geoportalboran.org/en/>

Expertise

MEDINA Project (FP7)



In collaboration with the **Università Ca' Foscari from Venice** and the **European Spatial Agency**. We developed a geoportal for showing data and integrated coastal monitoring tools into **GEOSS**. Generation of nodal, multipartners SDI, with OGC services interfaces and compliant with INSPIRE and EuroGEOSS directives. It focuses on the creation of ecosystem indicators aimed at coastal managers to help their decision-making. It include catalog, mapping services and a complete and functionality rich geovisor based on twin viewscreen for enhanced time-series data comparison.

More info: <http://www.medinageportal.eu/>

Team

Geographers, computer engineers, designers, architects, economists, biologists and engineers are our raw material.



Héctor García
CEO



Alberto Asuero
CTO



Juan Pedro Pérez
Chief Science
Officer



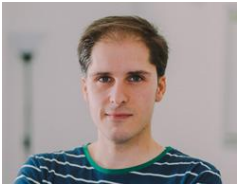
Paula Juliá
Project Manager



Javier Aragón
Frontend developer



Cayetano Benavent
GIS Analyst



Raúl Yeguas
Frontend developer



Jose Gil
Art director



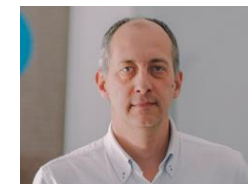
Sofía Inés García
Product developer



Miguel Macías
Strategy & business
development



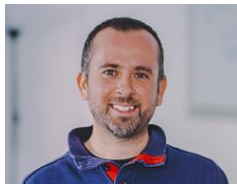
Isabel Pozuelo
Data analyst



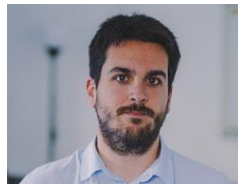
Javier Viñuales
Sales engineer



Davide Senatra
Designer



JuanRa González
Developer



Miguel Silva
Developer



J. Antonio Rodríguez
Developer

Clients

Since 2007, more than 324 customers in 8 countries have trusted us, we have developed more than 130 projects and created more than 70 applications.



Thank you.

www.geographica.gs



HEADQUARTER

Avenida de Grecia 8
41012 Seville
Spain

+34 954 701 157
hello@geographica.gs

geographica 