

# Activate your data. Create knowledge to optimize life in natural areas & their environment.

## OUR APPROACH

---

In Geographica we design and develop interactive web platform to share environmental project's information & data

[www.geographica.gs](http://www.geographica.gs)



## CONTACT

**Isabel Pozuelo**

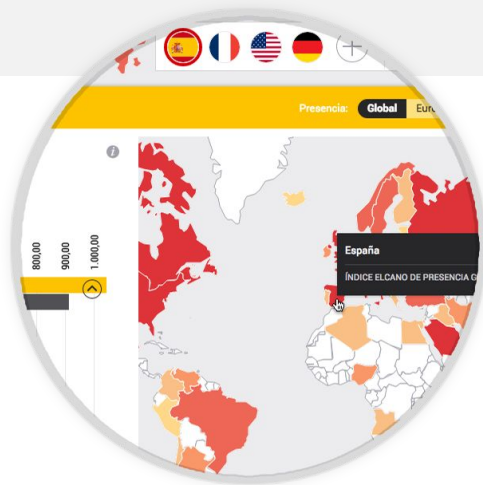
Data Analyst

[isabel.pozuelo@geographica.gs](mailto:isabel.pozuelo@geographica.gs)

geographica 

# Analyze, integrate and visualize your data

Improve data transparency and promote citizen participation



01

## Create knowledge

We analyze and extract knowledge from your data. We develop tools to edit online your spatial information, create indicators, build simulations with past and futures scenarios, everything in the cloud. Easy and quick.



02

## Organize your data

Geographica develops mobile and web applications that mix easily in just one place a great amount of data, explore it geographically and make decisions within a spatial perspective.



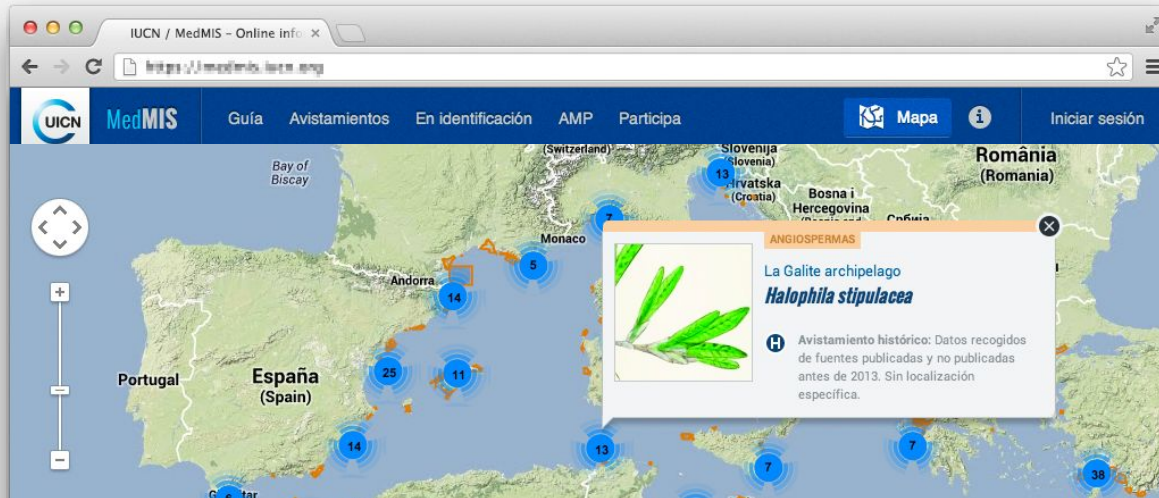
03

## Project your data

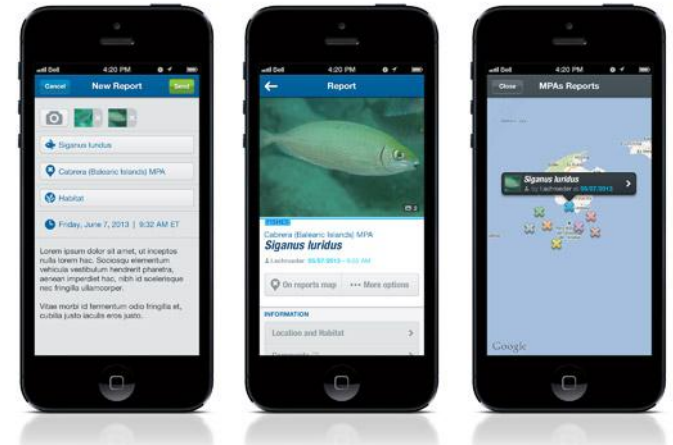
We create maps, powerful and intuitive graphic visualizations, find patterns and connect your information with others more effectively. Use gamification techniques to engage users.

Expertise

# Monitor invasive species in Mediterranean Marine Protected Areas



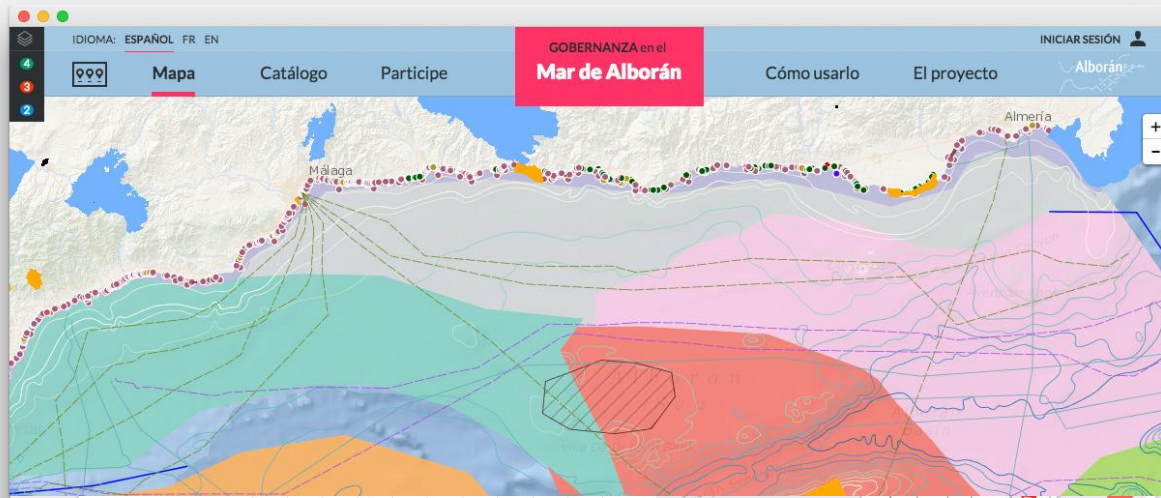
MedMIS is an collaborative **Information System for monitoring marine invasive species** in Mediterranean Marine Protected Areas (MPAs). It has a **mobile application** and a **web platform**. It provides about 50 identifying sheets of all of the most important marine invasive species in the Mediterranean Sea. It allows marine scientists or people interested in conservational issues to upload reports of sightings of invasive alien species and to take part in identification discussions.



More info: [www.iucn-medmis.org](http://www.iucn-medmis.org)

Expertise

# Geoportal for the Alboran Sea



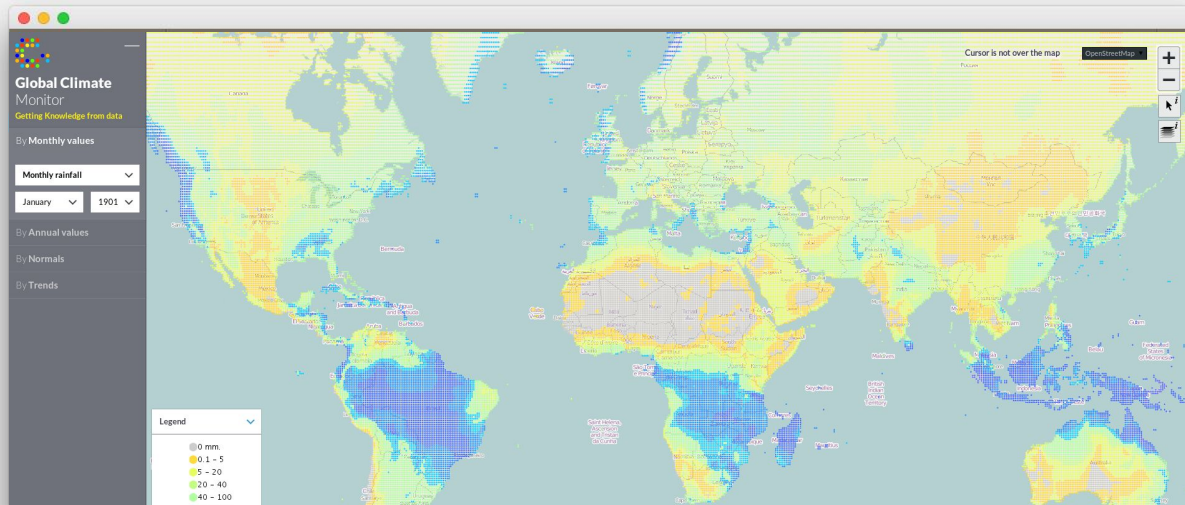
We have developed the **Geoportal for the Governance in the Alboran Sea** for the IUCN (International Union for Conservation of Nature). The geoportal aims to facilitate the exchange of experiences among stakeholders as to identify and unify the priorities that will improve the governance of natural resources in the Alboran Sea and promote sustainable and integrated management of the marine environment which makes it a powerful tool combining scientific data and information and collaborative stories like good practices performed in the Alboran Sea or biodiversity sightings.

More info: <http://www.iucn-geoportalboran.org/en/>



Expertise

# Global Climate Monitor

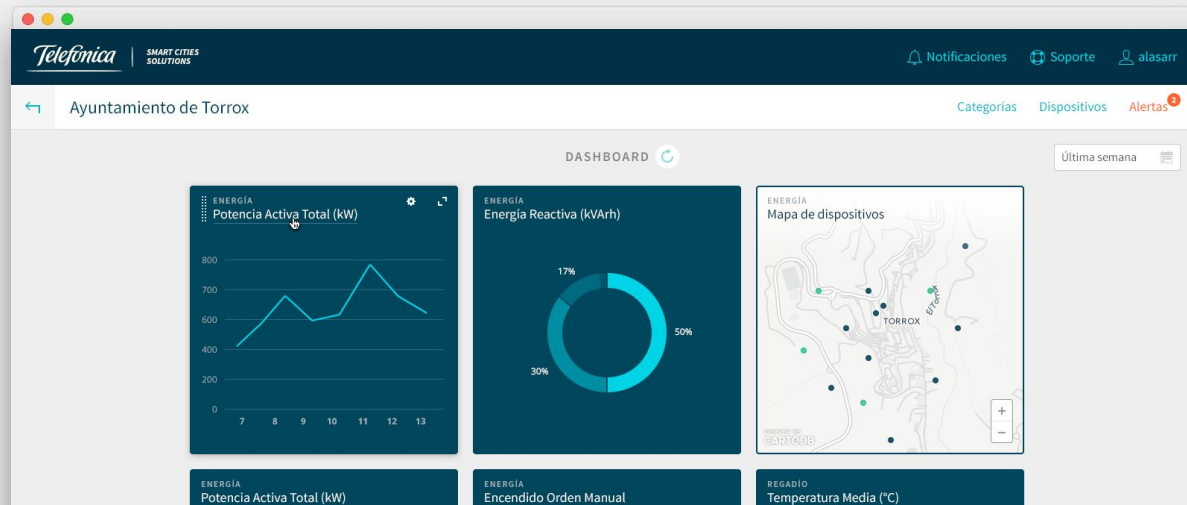


The **Climate Research Group** from University of Seville has teamed up with Geographica to create an online geovisior for data analysis and visualization. This impressive data source is been used by the Climate Research Group to **study drought effects and patterns** and as a testbed for their droughts studies and indices. It includes data coming from more than 4000 weather stations around the world, on a month-by-month basis and a 0.5×0.5 degree resolution.

More info: <http://www.globalclimatemonitor.org/>

Expertise

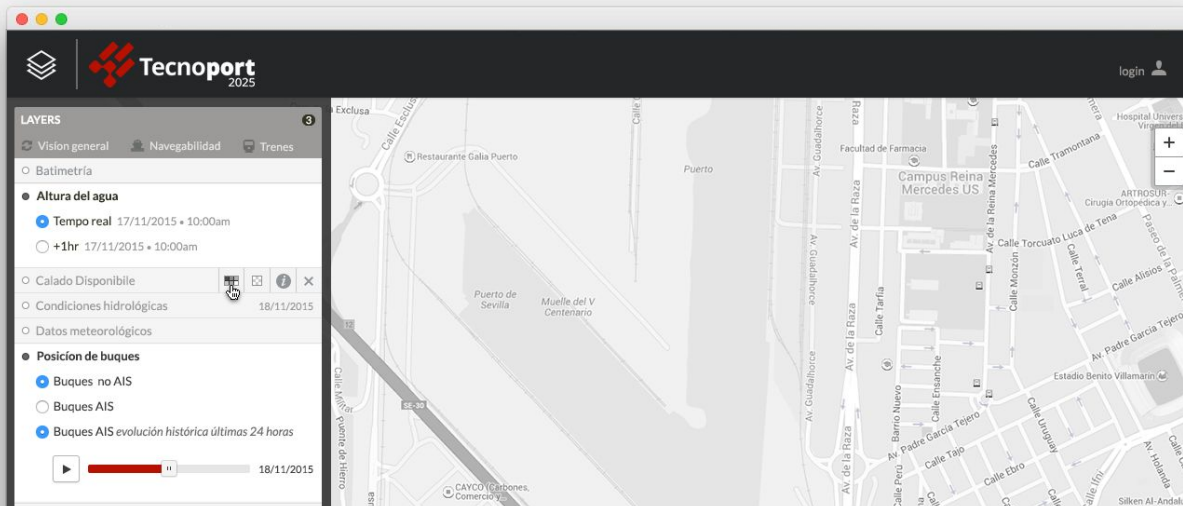
## Real time data from sensors - emissions, lighting...



Geographica works with Telefónica in Smart City projects. Telefónica has installed sensors in several cities to measure real time data on different themes (emissions, lighting, etc.). Geographica has developed a really easy to use web platform. We are processing and analysing this huge amount of Big Data. We integrate, analyze this data, and develop solutions for getting the best insights and conclusions. The aim of the project is to **improve the quality of life, reduce energy costs and environmental impact.**

Expertise

# Big Data to monitor river basins



Tecnoport2025 is an I+D+i project developed for Sevilla Port Authority. Geographica has developed a complex system for **real time data** processing and interpolation. Data can be easily visualized in a simple application that shows real time data about the height of the water levels, draught, 24 hours forecast, ships position, etc. The study area covers the whole Guadalquivir river. **The aim is to improve efficient and sustainable river basin management.**

Expertise

# Smart Cities & Big Data for México DF



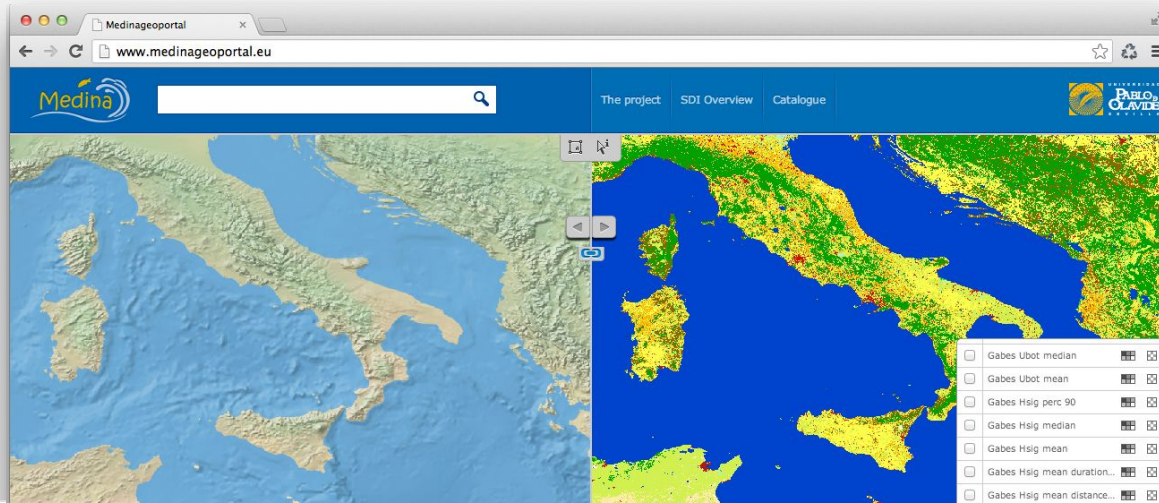
The government of Mexico DF has engaged us for designing and developing a private web platform that process, analyze and show in a very simple way a huge spatial data catalog (Big Data) on a wide range of themes related to Mexico DF (security, environment, society, economy, heritage, etc.).

Thanks to the platform they can easily monitor their territory and improve their decision making processes



Expertise

# MEDINA Project (FP7)

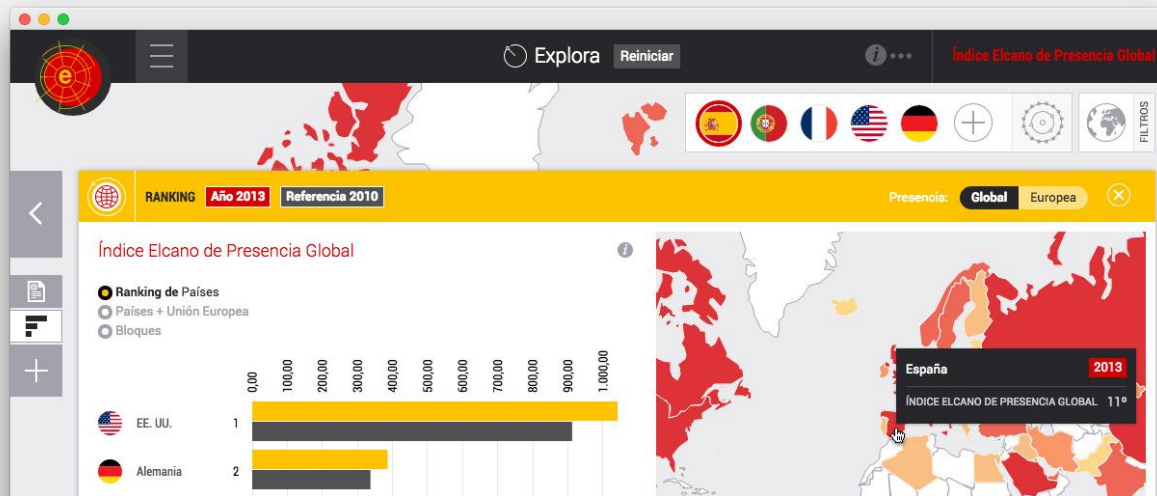


In collaboration with the **Università Ca' Foscari from Venice** and the **European Spatial Agency**. We developed a geoportal for showing data and integrated coastal monitoring tools into **GEOSS**. Generation of nodal, multipartners SDI, with OGC services interfaces and compliant with INSPIRE and EuroGEOSS directives. It focuses on the creation of ecosystem indicators aimed at coastal managers to help their decision-making. It include catalog, mapping services and a complete and functionality rich geovisor based on twin viewscreen for enhanced time-series data comparison.

More info: <http://www.medinageoportaleu/>

Expertise

# Elcano Global Presence Index



The new Website of **Elcano Global Presence Index**, a project from Elcano Royal Institute, presents a tool conceived and developed for analysing both the international relations and the foreign policy of each of the countries.

We have designed complex algorithms for the Index calculation. We designed and developed this powerful tool to see statistics, browse countries rankings and compare data and indicators among countries and different time moments, everything in a clear and simple way, with maps, charts and interactive tables.

More info: <http://www.globalpresence.realinstitutoelcano.org/>

# Team

Geographers, computer engineers, designers, architects, economists, biologists and engineers are our raw material.



**Héctor García**  
CEO



**Alberto Asuero**  
CTO



**Juan Pedro Pérez**  
Chief Science  
Officer



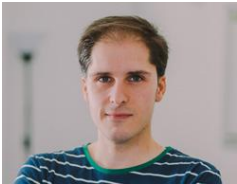
**Paula Juliá**  
Project Manager



**Javier Aragón**  
Frontend developer



**Cayetano Benavent**  
GIS Analyst



**Raúl Yeguas**  
Frontend developer



**Jose Gil**  
Art director



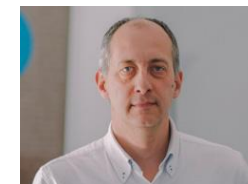
**Sofía Inés García**  
Product developer



**Miguel Macías**  
Strategy & business  
development



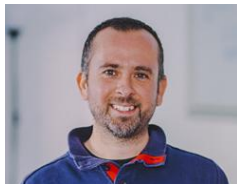
**Isabel Pozuelo**  
Data analyst



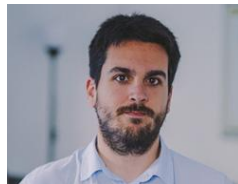
**Javier Viñuales**  
Sales engineer



**Davide Senatra**  
Designer



**JuanRa González**  
Developer



**Miguel Silva**  
Developer



**J. Antonio Rodríguez**  
Developer

# Clients

Since 2007, more than 324 customers in 8 countries have trusted us, we have developed more than 130 projects and created more than 70 applications.



# Thank you.

[www.geographica.gs](http://www.geographica.gs)



HEADQUARTER

Avenida de Grecia 8  
41012 Seville  
Spain

+34 954 701 157  
[hello@geographica.gs](mailto:hello@geographica.gs)

geographica 